

*FAHS Heritage
Handbook:
A Guide for Historical
Societies*

Judy Gale Rechner
FAHS
2002

First published in 2002 by FAHS

© Federation of Australian Historical Societies Inc

This book is copyright. Apart from fair dealing for the purposes of private study, research, criticism or review as permitted under the Copyright Act, no part of this work may be stored, reproduced or transmitted in any form or by any means without prior permission from the publisher. Inquires should be made to the publisher.

ISBN 0-9595714-6-9

Compiled by Judy Gale Rechner

Edited by Ruth Kerr

Produced by FAHS

Published by FAHS, GPO Box 1440, Canberra ACT 2601.

Foreword

Historical Societies are a clearly identifiable and continuing presence in Australian communities and they can play a key role in locating and preserving the nation's heritage. To assist them in this significant task the Federation of Australian Historical Societies Inc (FAHS) has prepared this handbook to help local historical societies in that necessary task. It also sets out the government agencies, the laws and other community and professional organisations responsible for interpreting Australia's heritage. The aim of publishing the handbook is to advice historical societies on how they to can obtain assistance and guidelines in documenting, protecting and interpreting Australia's cultural heritage.

Many professionals working in the heritage area face the same problem of unravelling the bewildering number of government agencies and constantly changing laws relating to heritage. Historical societies are not alone and may have equal confidence with the architects, engineers and archaeologists that they are addressing the right issue with the right tools.

The FAHS has set out to assist historical societies members and give them confidence as significant community organisations in participating in debates over development and the establishment of heritage trails and technological networks of common interest.

This publication has been made possible using money provided under the Commonwealth Government's Grants to Environment and Heritage Organisations program.

Dr Ruth Kerr
President of FAHS

Acknowledgment

The author acknowledges assistance from FAHS especially Gerard Hogan and Ruth Kerr and others such as Lee Adendorff, Bob Alford, Peter Bell, Saffron Benner, Helen Bennett, Murray Brown, Robert Bruce, Susan Carey, Michael Clarke, Cathie Clement, Matthew Devine, Lynn Drew, David Dolan, Bob Ellis, Alan Graham, Robin Gregory, Robin Grow, Jodie Gysen, Sue Harlow, Michael Hodgkin, Bridgit Hutton, Jane Lennon, Elaine Lindsay, Pauline Logan, Brian Long, Paul McInnes, Eric Martin, David Nutley, Frances O'Neill, Geoffrey Pie, Bill Oliver, Taryn Peck, Ken Phelan, Brian Samuels, Mary Sheehan, Berri Shelley, David Smith, John Smith, Joy Souter, Stephanie Sparke, Graeme Ward, Jenni Williams and many others who answered my e-mail inquiries.

The text and web addresses for this handbook have been written as accurately as possible on the basis of evidence available at this time and the author and the FAHS cannot accept responsibility for errors, changes or omissions. Further information and updates would be appreciated.

Table of Contents

| | |
|-------------------------------------|----|
| Introduction | 1 |
| Guides for heritage protection | 2 |
| Problems with terminology | 4 |
| Identification and protection | 7 |
| Agencies: statutory | 12 |
| Agencies non statutory | 14 |
| National grants and funding sources | 19 |
| Commonwealth Government | 27 |
| Australian Capital Territory | 33 |
| New South Wales | 39 |
| Northern Territory | 49 |
| Queensland | 55 |
| South Australia | 59 |
| Tasmania | 65 |
| Victoria | 71 |
| Western Australia | 77 |

Introduction

Many buildings, structures, landscapes, shipwrecks and objects have been identified as having a story to tell or have a technical, scientific or aesthetic value that makes them significant. Some National Trusts in Australia have been identifying such places and objects for many years and have created registers or lists of places that they felt should be saved for present and future generations. Although all Australian governments have introduced legislation to identify, protect and conserve heritage items, it is up to local communities to assist all levels of government to continue to protect these heritage assets.

This book is intended to provide a practical guide for local historical societies that wish to identify and protect local heritage places, objects and records. Identification and research of heritage sites is a way of supporting your local community. This can encourage increased cultural tourism while enriching your own collection and community standing.

This handbook starts with:

- a short annotated listing of useful guides
- brief section on meanings of some terms
- how to identify and protect heritage assets, and
- national grants.

The main part of the handbook commences with the Australian federal government followed by each state/territory arranged alphabetically. It deals with:

- legislation
- peak government heritage body
- heritage register
- criteria for assessing cultural heritage
- government funding for heritage
- applicable web pages, and
- other agencies and funding.

In this modern age the most convenient way to find the pertinent information is to look on the web. Users must beware that web

page addresses (URLs) change as do government policies and names of agencies.

Guides for heritage protection

An excellent and detailed user-friendly book on how communities can identify, conserve and protect heritage places is *Protecting local heritage places: A guide for communities* published by the Australian Heritage Commission in 2000. At <http://www.ahc.gov.au/infores/publications/localheritage/ahc-2.html>, you can download this or send an e-mail to ahc@ea.gov.au requesting a copy or order a free copy from the Australian Heritage Commission, GPO Box 787, Canberra ACT 2601.

Another guide to assessing cultural significance, that explains the principles and concepts for modern conservation practice is *The Burra Charter* published by Australia ICOMOS (the Australian national committee of the Paris-based International Council on Monuments and Sites) in 2000. If you visit the [Australia ICOMOS](http://www.icomos.org/australia/) web page <http://www.icomos.org/australia/> and click on Charters and publications, then Burra Charter, you can order a copy of the Charter or read all about it. The Burra Charter can be applied to natural, indigenous and historical places with cultural heritage values. It has been adopted by all levels of Australian government as the standard tool for guiding conservation work and underlies most heritage registers and/or inventories.

To assist people making decisions on the future of places with natural heritage significance the [Australian Natural Heritage Charter](#) published by the Australian Heritage Commission for IUCN in 1966 is very useful. The Charter can be applied to public and privately owned places, to terrestrial, marine or freshwater areas, and to protected and unprotected areas.¹ It can be viewed or downloaded from <http://www.ahc.gov.au/infores/publications/anhc/index.html> or write requesting copy from either the Australian Heritage

¹ <http://www.ahc.gov.au/infores/publications/anhc/index.html>

Commission, GPO Box 787, Canberra ACT 2601, or the Australian Committee for IUCN (World Conservation Union), GPO Box 528, Sydney, New South Wales, Australia 2001.

Complementing the charter is the [Natural Heritage Places Handbook](#), which expands on the principles in the Charter and explains the processes for conserving natural heritage places. Also provided are practical examples of how to apply the Charter. This 1998 handbook can be viewed or downloaded at <http://www.ahc.gov.au/infores/publications/nhnames/contents.html> or write requesting copy from either the Australian Heritage Commission, GPO Box 787, Canberra ACT 2601, or Australian Committee for IUCN (World Conservation Union), GPO Box 528, Sydney, New South Wales, Australia 2001.

Ask First: A guide to respecting Indigenous heritage places and values published by the Australian Heritage Commission in 2002 complements other heritage guidelines including the Burra Charter and the Australian Natural Heritage Charter. It is designed to help developers, planners, researchers and managers identify and address Indigenous heritage issues.² Visit <http://www.ahc.gov.au/infores/publications/indigenouheritage/index.html> to order or download this guide, or write requesting copy from the Australian Heritage Commission, GPO Box 787, Canberra ACT 2601.

Another useful book available from the Australian Heritage Commission is *Successful Tourism at Heritage Places: A guide for tourism operators heritage managers and communities*. This was a joint project between the Australian Heritage Commission, the Cooperative Research Centre for Sustainable Tourism and the Tourism Council Australia. Published in 2001, this guide helps those who need to understand the issues involved in planning for and managing tourism at heritage places. It provides information on:

- understanding heritage significance
- heritage tourism

² <http://www.ahc.gov.au/news/mediareleases/2002/askfirst.html>

- guiding principles for tourism at heritage places
- five guidelines that provide practical advice and extensive case studies
- a glossary and
- reference list.

Problems with terminology

The **cultural heritage significance** of a place is generally taken to mean the features that have value for past, present and future generations. Indigenous, natural and built significance can all have cultural heritage significance, although some sections of the community wrongly think that their interest area is the only cultural heritage, others that cultural heritage refers only to historic places. The *Burra Charter* explains that the terms cultural significance, heritage significance and cultural heritage value are synonymous and that significant values can be aesthetic, historic, scientific, social or spiritual value.³

The meaning of the term **place** also varies and you may need to check it in the relevant heritage legislation or government web pages. The *Burra Charter* defines ‘place’ as any site, area, land, landscape, building, group of buildings or other works, and may include components, contents, spaces and views. ‘Place’ can include memorials, gardens, trees, parks, places of historical events, urban areas, industrial places, archaeological sites, and spiritual and religious places.⁴

Conservation has become an accepted term to describe the preservation of our natural environment, but it applies to all cultural heritage. It is important to remember that almost anything can be conserved; a house, museum, church, factory and objects such as a piece of broken china, a fire or water damaged painting or book, a textile or a piece of furniture. Conservation means looking after something in order to retain its

³ *The Burra Charter: The Australia ICOMOS charter for places of cultural significance* 1999. Australia ICOMOS, p.2.

⁴ *The Burra Charter* 1999. Australia ICOMOS, p.2.

cultural heritage significance. ‘*Conservation* is based on a respect for the existing *fabric, use, associations and meanings*. It requires a cautious approach of changing as much as necessary but as little as possible’.⁵

Definitions of **moveable heritage** differ. It can be defined as objects that people create or collect that can be artistic, technological or natural in origin and that can be assessed as having aesthetic, historic, scientific or social significance or other special value. Moveable heritage or objects can range from small domestic items to large transport vehicles, from a single item to a group or collection of objects. It can include machinery, furniture, transport items, religious and ceremonial items, museum objects and collections and (in NSW) collections and archives relating to sporting and community organisations. It can also include the non-tangible, what is felt, known or experienced. These traditions, customs and habits are increasingly being recorded and documented in photographs, films, tapes and disks.⁶

For information on the *National conservation and preservation policy for movable cultural heritage* published by the Heritage Collections Committee of the Cultural Ministers Council in 1995 check out <http://www.nla.gov.au/preserve/cult.html>. To obtain a copy, write to the Secretary, Cultural Ministers Council, Department of Communications and the Arts, GPO Box 2154, Canberra ACT 2601.

Visit <http://www.ea.gov.au/heritage/awh/movable/index.html> for more information on the protection of Australia’s moveable heritage.

Documents or **archival material** held by Historical Societies may have significance at the local, state or national level and these invaluable records need to be preserved, catalogued and managed. The criteria for assessing the cultural heritage significance of archival materials are similar to those for other

⁵ *The Burra Charter* 1999. Australia ICOMOS, p.3.

⁶ <http://www.ea.gov.au/heritage/awh/movable/index.html> and <http://www.nla.gov.au/preserve/cult.html>

moveable objects or place. Basically, do the item(s) have aesthetic, historic, scientific or social significance or other special value for future generations as well as for the present community?

Identification and Protection

Why is it necessary for historical societies to become involved with identifying and protecting our heritage?

- They are accepted as a local community body with the knowledge to assist professionals
- Often they are the only local body with material/evidence/documents necessary to build a case for protection
- They can lobby not just for their own collection but for places within their area
- They can identify, research and report before things become at risk or threatened
- They can inform the local government entity, heritage advisers, and consultants as to what is important to the community

The key steps in identifying and protecting our heritage are:

- Find the facts
- Document them
- Analyse them
- Determine what you are going to do with the facts and findings, ie., develop a plan
- Prepare the necessary submissions
- Implement the plan.

Identification

Before something can be protected or conserved it must be identified. Identification of cultural heritage places can be derived from many sources including local knowledge, windscreen surveys, heritage and/or thematic studies, local area plans, and local government planing schemes.

The first step in assessing cultural heritage significance requires gathering and recording information about the item. This includes documentary, oral and physical evidence.

Documentation

This is then written as a report that may be part of a conservation plan, heritage tour book or nomination for inclusion on a heritage register.

Analysis

Why is a place or object or documentary record significant? Because it has social, aesthetic, historic, scientific, special, bio-diversity, ecosystem, geo-diversity values or some other value for past, present and future generations.

The purpose of the analysis is to specify and verify the significance of the material you have collected. Generally, facts are significant because of their relationship to other people, places, things, events or values. That relationship can be as a cause, an effect, as an example, as a circumstance that throws light on something else, or that provides evidence of its identity, use, location or some other characteristic.

The steps to assess cultural heritage significance are:

1. Gather physical, oral and documentary evidence
2. Identify and communicate with relevant community members/stakeholders for further information
3. Research the historical, material, design or architectural context and how this item has been influenced by the course of history
4. Compare with similar sites or objects
5. Start writing the report
6. Assess and analyse all the information about the item according to the appropriate criteria
7. Write the conclusions which form the statement of cultural heritage significance.

It is important in this process to record material as it is collected and to continually review your work to check for gaps in the trail

of evidence, the logic of your analysis and that your probable conclusions will be balanced and sensible.

Develop a protection plan

In order to protect heritage places, objects and/or archives it is necessary first to identify, research and write a report about them that includes their significance using criteria such as those used by the Australian Heritage Commission, appropriate government or National Trust. Each government section in this handbook includes the criteria used for assessing cultural heritage significance by the relevant agency. While most authorities only require one criterion it is usual to include two, three or more.

The report should also include recommendations about what needs to be done to provide actual protection. In many cases listing on the appropriate register can provide protection. This is clearest in the case of places.

Places listed on a state or territory government heritage register are protected by legislation; places on a local government heritage listing also have some protection, usually under statutory planning controls. The Register of the National Estate only protects places that belong to the Commonwealth. While National Trust registers have no statutory authority they do have moral strength and have a high degree of public credibility.

Nominations for heritage listings have several components.:

- Firstly the identification of the place or object, this usually includes:
 - current and former names of the place or object
 - location
 - ownership details
 - land description
- history including the historical context/relationships relevant to the place or object
- description as it is at the time of writing

- points of cultural heritage significance that are drawn from the history and description

Where listing is not an option, because no appropriate list exists or because the matter is not of sufficient significance, other options must be identified. These can include a conservation or archival plan, the provision of suitable premises, changes to traffic arrangements, building covenants or whatever is necessary to protect the item or place.

In any event, the plan should include:

- A clear statement of what is proposed
- appropriate costings, and where you expect the funding should come from, and
- the relationship between:
 - the proposed action
 - who is to do it
 - the sequence of events, including proposed timeframes, and
 - the risks involved for all stakeholders. In this context, risks includes the negative consequences of doing or not doing what is proposed and an indication of the likelihood of that those consequences will occur. If possible show how those risks can be managed.

Preparing a submission

In preparing a submission

- Identify who is to receive the submission and
- Present it in such a way that it makes compelling sense to the recipient.

Who is to receive the submission?

If submissions are to be made to government bodies, remember that, regardless of the level of government, they generally have a set of criteria for approving grants or assistance of this nature. Make sure you understand the criteria. Talk to the relevant officials and ask them to explain what is required. Make sure that you address all the criteria. If you think that some are not

relevant show why you think that is the case. Remember, if you do not address the criteria explicitly, it is less likely that they will approve your application.

If submissions are to be made to private enterprise, it is again worthwhile to talk to the relevant officers of the company. In many cases, particularly large corporations, they will also have written criteria. If so make your case in the light of them. If not try to ascertain what are the important considerations in their decision making. Make sure you understand if there are to be any 'strings' attached, and that you can live with them.

Presentation

It is not necessary to have a fancy presentation, although if you can, it won't do your case any harm. The important point to remember about submissions is that the purpose is to gain a favourable decision, not to demonstrate your research capability or engage in a public relations exercise. A short executive summary is often useful. It should include:

- A short statement of what you are asking for
- A summary of the facts or findings of your research. This should be the most telling points only. Refrain from trying to fill it with all the detail.
- A statement of reasons why they should agree to your submission. Again this should be as short and focused as you can make it.

You might then include, as attachments:

- A more detailed summary of your research and analysis. In particular, include expert opinions and reports; and
- your plan.

The extent of your detailed planning is sometimes a significant factor in a successful outcome. Of particular relevance in many contexts, eg federal government and big business, is the risk analysis, because it helps them make a business decision and provides an accountability framework for them.

Implementation

Provision should be made to ensure that the objectives that you set for yourself are in fact being met, that plans remain relevant and that money is spent and accounted for properly.

Agencies: Statutory:

Visit <http://www.ea.gov.au/soe/2001/heritage/appendix1.html>
Appendix 1 of the *Australia State of Environment Report 2001* for a summary of commonwealth, state and territory, natural and cultural heritage legislation.⁷ Another overview of heritage protection in Australia can be found at <http://www.ahc.gov.au/protection/>

The [Australian Heritage Directory](#) has links to government heritage agencies while the Australian Heritage Places Inventory ([AHPI](#)) contains summary information about State, Territory and Commonwealth Heritage Registers, relevant legislation and contact details. You can use 'Search' to locate items on Commonwealth, State and Territory Heritage Registers. AHPI is located at <http://www.heritage.gov.au/ahpi/about.html> and can be used to search by placename, address, local and/or government area or by key word search such as church, hall, monument or mine. The Australian Heritage Directory home page is at <http://www.heritage.gov.au/>. This information is only available via the web. Although most government registers are available in paper format these are not widely distributed or always easily accessible.

[Environment Australia](#) is a federal government agency that is part of the Department of Environment and Heritage. Its home web page is at <http://www.ea.gov.au/>. The parent body, the Department of Environment and Heritage, is responsible for the Australian Heritage Commission. The Department administers a number of Acts which protect aspects of the National Estate

⁷ Jane Lennon 2001. *Australia state of the environment report 2001: Theme report*. Canberra, Commonwealth of Australia.

including the *Aboriginal and Torres Strait Islander Heritage Protection Act 1984*, the *Historic Shipwrecks Act 1976* and the *Environment Protection and Biodiversity Conservation Act 1999* (EPBC).

The **Australian National Shipwreck Database** is joint project developed and maintained by the Commonwealth, States and Territories, and Australasian Institute for Maritime Archaeology. The database is currently being redeveloped and will be added to the Department of the Environment and Heritage web site during 2002 and available at <http://www.heritage.gov.au>. In the interim period, visit the Australasian Institute of Maritime Archaeology (**AIMA**) web page Australian National Shipwreck Database or <http://www.aima.iinet.net.au/databases/aimadata.html>. For further information on a particular shipwreck visit <http://www.aima.iinet.net.au/agencies/aimastatecont.html> then click on the State or Territory database where the shipwreck is located. Information about the *Commonwealth Historic Shipwrecks Program and Historic Shipwrecks Act 1976* can be found at <http://www.ea.gov.au/heritage/awh/shipwrecks/index.html>. For further contact the Commonwealth Historic Shipwrecks Program, Identification and Conservation Branch, Environment Australia, GPO Box 787 Canberra ACT 2601 or phone (02) 6274 2132 or write to the Maritime Heritage Unit, NSW Heritage Office, Locked Bag 5020, Parramatta NSW 2124 or telephone (02) 9849 9574.

A useful web page is <http://www.heritage.vic.gov.au/Shipwreck-Index.html> which has stories on current Victoria shipwrecks and links to other shipwreck web pages.

Many local governments have a Heritage Advisory Committee. Such committees usually include interested members of the community. By becoming involved in such a committee, members of local Historical Societies can contribute to the identification and protection of local heritage assets.



The Warwick Waterworks

Photo courtesy of the Royal Historical Society of Queensland

Agencies: Non-statutory:

National Trusts in each state and territory, except South Australia, have registers of places of heritage significance. None of these registers have any legal obligations. The registers are available for public access to members, individuals or organisations interested in finding out more about a place(s). With the exception of Victoria and Queensland the register is published. The WA list is available on CD-ROM. The Australian Council of National Trusts ([ACNT](http://www.nationaltrust.org.au/)) web site <http://www.nationaltrust.org.au/> has links to individual state and territory trusts. You can contact the ACNT by e-mail acnt@nationaltrust.org.au Australian or by phoning (02) 6247 6766.

In 1998 the ACNT commenced the Endangered Places program as a reaction to concerns that existed within the National Trust that heritage places remained threatened because of poor planning, redevelopment, neglect to name a few. The program is intended to assist community groups with their efforts to conserve heritage places, broaden public understanding and appreciation of our heritage and put the owners of heritage places 'on notice' that they have ongoing duty of care responsibility.

A list is launched each year on the 22 August. It comprises nominations from state and territory National Trusts and community organisations. For further information contact the ACNT 02 62476766 or acnt@nationaltrust.org.au

Specialist organisations include:

- [Art Deco Society Inc](#) is actively involved in preservation of Art Deco buildings including listing buildings with the National Trust, Heritage Victoria and Tasmanian Heritage Council.⁸ Visit <http://www.artdeco.org.au/> for more information.
- **Institution of Engineers Australia (IEAust)** national offices is Engineering House, 11 National Circuit, Barton ACT 2600, the home page is <http://www.ieaust.org.au/> and contact phone number (02) 6270 6555. Information and advice on engineering heritage matters can be directed to Engineering Heritage Australia (EHA - the national body) or the divisional heritage groups of IEAust, located in capital cities (including Canberra) and in Newcastle. Divisional offices can be located from phone books or through http://www.ieaust.org.au/about_us/divisions.html or click on the [Divisions](#) tab.
- **Engineering Heritage Australia (EHA)** is responsible for promoting conservation of engineering heritage. Visit http://www.ieaust.org.au/./about_us/sig/eha/heritage_units.html for more particulars. Activities of Engineering Heritage

⁸ http://www.artdeco.org.au/artdeco_pages/artdeco_preservation.html

Australia (EHA) groups include the plaquing of heritage works/sites throughout Australia. Visit http://www.ieaust.org.au/about_us/sig/eha/plaquing_program.html and then click on Plaque Register for a current listing of identified places. Further details are available from the divisional heritage groups. The Plaquing guidelines are currently being revised to facilitate the nomination of works to government heritage registers. EHA has also published *Engineering heritage and conservation guidelines*, which set out the principles for the identification, assessment and conservation of engineering works. They are currently being revised to reflect changes in practice and legislation since their first printing.

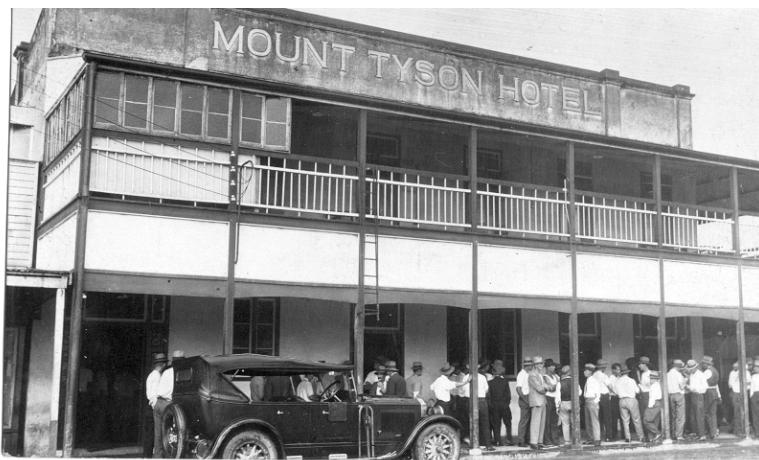
- **Royal Australian Institute of Architects (RAIA)**, National Office, PO Box 3373, Manuka ACT 2603, phone (02) 6273 1548 and their home web page is <http://www.architecture.com.au/>. All states and territories have registers of significant twentieth century architecture and details are available through each RAIA Chapter office. For your state/territory chapter check in the capital city telephone book or visit the RAIA web page, highlight The RAIA and select Contact details. RAIA has a Heritage Committee which has established National Criteria and is gradually working on consistent format and information for all states and working toward National and International listings. To find a few of the significant buildings visit the RAIA home page, highlight Looking and select Heritage buildings. The RAIA is intending to publish its Heritage Register on the web.

Some other useful web addresses:

Visit <http://www.marquis-kyle.com.au/links.htm> and click on Heritage Registers for annotated links to information about all Australian commonwealth and state heritage registers, plus a few examples from abroad. Or click on Conservation charters for links to various charters, manifestos and treaties.

Guidelines to writing a successful submission can be located at <http://www.arts.tas.gov.au/glguide.htm>.

Check with your state/territory universities to see if they have a cultural heritage or applied history section and if they can offer you any advice or assistance. For example the Curtin University [Research Institute for Cultural Heritage](http://www.culturalheritage.curtin.edu.au) is a major provider of heritage research, interpretation, conservation advice and policy development. The Institute gives advice and helps groups prepare applications, and carries out conservation plans etc. This is done both on a paid basis from grant funds and sometimes as student's projects or as partnerships with community groups. Their web page is <http://www.culturalheritage.curtin.edu.au>. The contact telephone number is (08) 9266 3717 or write to GPO Box U1987, Perth 6845 Western Australia.⁹



Mount Tyson Hotel

Photo courtesy Royal Historical Society of Queensland

⁹ David Dolan

The **Australian Council of Professional Historians Associations** ([ACPHA](http://www.historians.org.au/)) is the national body representing Professional Historians in Australia (PHA). Its web site is <http://www.historians.org.au/> and it has links to the PHAs in each state and territory. Most associations maintain a register or directory of their members who offer consultancy services in history. New South Wales, Queensland and South Australia have information about professional historians on their web sites while PHA (Victoria) operates a professional employment service and circulates information to accredited professional historians on a weekly or fortnightly basis.

National grants and funding sources

Moveable heritage grants

Australian Museums On Line ([AMOL](http://amol.org.au)) web page [http://amol.org.au/](http://amol.org.au) has links to various sites relevant to museums and moveable heritage. AMOL produces various resources and maintains several services for people working in the heritage sector. These include a database of products and services called ResourceFinder, a database of touring exhibitions, a database of venues that host touring exhibitions, an online course in collection digitisation and resources for small and regional institutions.

Visit their web page http://amol.org.au/craft/craft_index.asp which has a number of stand alone resources developed for those managing small collections. Click on Conservation resources for excellent information. AMOL is a Heritage Collections Council (HCC) project. The HCC is a joint initiative of the Commonwealth, State and Territory Governments in partnership with the Australian museum sector. For more information write to AMOL Co-ordination Unit, Powerhouse Museum, 500 Harris Street, Ultimo NSW 2007, or phone (02) 9217-0346.¹⁰

The [Culture and recreation portal](http://www.cultureandrecreation.gov.au/grants/) has a very useful grants database at <http://www.cultureandrecreation.gov.au/grants/>. To use this browser to search for all applicable information:

- choose your cultural Sector/Area of interest such as Historical heritage
- then Type of assistance such as grant or financial
- then Region and click on Search

In Australia, the national organisation for conservators and people interested in the preservation of moveable cultural material is the **Australian Institute for the Conservation of Cultural Material** ([AICCM](http://www.aiccm.org.au)). This organisation is involved with

¹⁰ Lee Adendorff, Paul McInnes and AMOL on-line.

conservation including the related activities of preservation and restoration. To AICCM, the term “Cultural Material” refers to all types of objects, ranging from the purely functional through to the purely decorative. It encompasses all items of historic, aesthetic, sentimental and monetary value. Information about organisations, sources of information and grants funding information for AICCM is located at <http://www.aiccm.org.au/aiccm/inform/>.¹¹ The address for further information is Australian Institute for Conservation of Cultural Materials, The Secretary, GPO Box 1638, Canberra ACT 2601.

The Maritime Museums of Australia Project Support Scheme (MMA PSS) offers grants up to \$5,000 to small regional museums, local historical societies and larger cultural institutions throughout Australia to preserve, identify and promote maritime history. MMA PSS web address is <http://www.anmm.gov.au/mmapss.htm> and the postal address is Maritime Museums of Australia Project Support Scheme, Australian National Maritime Museum, GPO Box 5131, Sydney NSW 2001 and telephone number (02) 9298 3777.

The range of these grants includes:

- conservation of individual items
- organising a computerised database for a collection or special collection
- action plan for a proposed heritage trail
- conservation plan for a museum or major moveable object within the museum
- restoration of a heritage display unit
- management and storage of a heritage collection
- research history of a museum’s historic item
- producing education kit for a museum
- design and construct interpretive displays.¹²

¹¹ <http://www.aiccm.org.au/aiccm/inform/>

¹² <http://www.anmm.gov.au/mmapss2.htm>

Documentary/archive heritage grants

The **National Library of Australia** in partnership with the Department of Communications, Information Technology and the Arts and the National Archives of Australia currently administers the largest documentation preservation grants scheme. This is the [Community Heritage Grants](#) with funding offered to Australian community organisations such as libraries, historical societies, museums, ethnic and indigenous groups who provide public access to their documentary heritage collections to preserve these collections. For more information visit <http://www.nla.gov.au/chg/> or ring (02) 6262 1147. Or write to The Coordinator, Heritage Grants Public Programs Division, National Library of Australia, Canberra ACT 2600 or e-mail chg@nla.gov.au.

Other grants

The **Cultural Heritage Projects Program** (CHPP) are administered by Environment Australia for the Federal Government. These heritage grants apply to private owners, local government authorities and not-for-profit incorporated organisations that own a place on a state/territory register, Trust list or the Register of the National Estate (RNE). Such owners are eligible to apply for funds for conservation of a listed historic or indigenous place or, to identify indigenous place(s) for listing.

Small sums of money are available for projects of Commemoration of Historic Events and Famous Persons. Under this scheme funding is available for monuments, exhibitions, surveys of historical sites that are of national significance.¹³

[Environment Australia](#)'s Toll free number is 1800 653 004 and <http://www.ea.gov.au/heritage/programs/index.html>. is the grant programs web page.

Some useful web pages for advice on **heritage grants Australia wide** are:

¹³ <http://www.ea.gov.au/heritage/programs/index.html>

- <http://www.statelibrary.tas.gov.au/Heritage/grants.htm>
- http://www.heritage.nsw.gov.au/02_subnav_02.htm
- <http://mgfnsw.org.au/resources/resources.php>, for information about funding sources for museums. To use this one click on Grants, then Grants and Funding sources available to Museums and Galleries. This web page has an annotated list of funding sources in NSW and Australia wide. This downloadable listing includes contact details, eligibility and closing dates.

A **Commonwealth government community grants** web page is <http://www.grantslink.gov.au/>, if you click on Links to other sites, or using Search type in Heritage for a listing of various state and federal grants and you can locate grants relative to your state or territory. This web page also includes tips on how to complete an application and links to other programs and government departments. You can phone Grants Link on 1800 062 222.

The [Aboriginal and Torres Strait Islander Commission](#) coordinates Aboriginal and Torres Strait Islander policy, provides funding, and advises Indigenous organisations. There are Offices in all states and the Northern Territory. For more information visit <http://www.atsic.gov.au/> or telephone either (02) 6121 4139 or (02) 6121 4138

The [Australian Institute of Aboriginal and Torres Strait Islander Studies](#) through its Research Grants Program funds and supports Aboriginal and Torres Strait Islander studies, and can support applications for heritage conservation research. The Institute maintains an extensive library and publications program. For more information visit <http://www.aiatsis.gov.au/> or telephone (02) 6246 1111.

[Regional Solutions Programme](#) may be a source of funding, if lateral thinking is used. The web address is <http://www.dotars.gov.au/regional/index.htm>. Under this scheme funding is available for community planning and development projects that address local issues and problems. Regional

Solutions has funded a number of projects related to heritage. It could be argued that a planning or development project that identifies heritage places or objects would assist with the economics of the rural or remote community. *Rural book*, is a comprehensive guide to Government services, and *CALP* (Commonwealth Assistance for Local Projects) a book on grants, and both can be obtained by calling the Commonwealth Regional Information Service on the toll free number 1800 026 222. Regional Solutions Programme is due to cease on 30 June 2004.

[Visions of Australia](#) aims to make exhibitions of cultural material accessible to a wider Australian audience. It provides grants to cultural and community organisations to develop and tour exhibitions of historical and scientific material, visual arts and craft, multimedia and Aboriginal and Torres Strait Islander culture throughout Australia. Exhibitions should have a predominantly Australian source or theme. There are two grant rounds each year and Historical Societies are encouraged to apply. For more information go to http://www.dcita.gov.au/graphics_welcome.html click on V, then Visions of Australia or write to Project Officer, Visions of Australia, GPO Box 2154, Canberra ACT 2601, the Toll free number is 1800 819 461.

The [National Australia Bank](#) has awards that reward volunteer organisations for programs or projects that they have conducted, in whole or in part, during the previous financial year. Of the six categories three may be pertinent: Art and culture; Community service; Environment, conservation and heritage. Category 4: Environment, conservation and heritage is for funding to community organisations that have contributed to the protection and preservation of Australia's environment and heritage. Activities include public advocacy, education, training and

preservation programs.¹⁴ For more information visit <http://www.national.com.au/Community> then the National's Community Link Volunteer Awards. Or contact your local National Australia Bank or ring 1800 807 121.

The [Macquarie Bank Foundation](#) funds programs that benefit the communities of which Macquarie is a part. Funding categories include the areas of education, the arts and the environment.

Visit http://www.macquarie.com.au/aboutus/community/mac_community.htm for more information. The funding criteria are flexible and open. To make a submission, check out the [application process](#). Each application is assessed on its individual merit and the Foundation welcomes applications for funding from a diverse range of community-based initiatives that are working in innovative ways to provide long-term benefits. All applications are formally reviewed quarterly.¹⁵ Thinking laterally the application could argue that by identifying and researching places of heritage value this could promote cultural tourism thus benefiting the community. For more information either visit the web page, write to Macquarie Bank Foundation, Government and Public Affairs, Level 22, 20 Bond St Sydney, NSW 2000 or phone (02) 9237 4092.

The [Myer Foundation](#) disperses approximately \$2 million each year to support innovation and social development in the community. As the arts and humanities are a measure of our civilisation and act as a vehicle for social change, the Foundation provides support to projects that contribute to defining a distinct Australian identity. Priority interests include conservation, environment and heritage and cultural development. For more information visit <http://www.myerfoundation.org.au/>. Or write to the Myer Foundation, 44th Floor, 55 Collins Street, Melbourne Vic 3000, or telephone (03) 9207 3040.¹⁶

¹⁴ <http://www.national.com.au/Community>

¹⁵ http://www.macquarie.com.au/aboutus/community/mac_community.htm

¹⁶ <http://www.myerfoundation.org.au>



Large Victorian lacquered jardiniere with hand painted porcelain bowls

Photo Courtesy of the Royal Western Australian Historical Society

[The Ian Potter Foundation](http://www.ianpotter.org.au) makes grants available to organisations and institutions in the humanities area. One aim of the foundation is to encourage the recognition of Australia's cultural heritage as an important component of education and community development. Preservation of the built environment is a further area of support which includes restoration work on numerous important churches and other heritage buildings. For guidelines contact the Foundation at Level 3, 111 Collins Street, Melbourne Vic 3000 or phone (03) 9650 3188 or use their web page <http://www.ianpotter.org.au/interest.htm>.¹⁷

[Australia's Cultural Network](http://www.acn.net.au/) is a worthwhile site as it has topics by category and state, and links to over 2,000 web sites and 850,000 pages about Australia's culture and recreation. This web address is <http://www.acn.net.au/>.

Don't forget to check your own local government authority for community grants and other relevant funding. <http://www.alga.com.au/sta.htm> is a listing of various state local government associations. Many of the larger local government authorities have published information on heritage and conservation to assist owners, planners, developers and/or school children. Some of these publications may be relevant to your organisation.

¹⁷ <http://www.ianpotter.org.au/>

Commonwealth Government

Legislation

Australian Heritage Commission Act 1975.

Proposed legislation has been presented to the Federal Parliament during the 2002 Budget session. These Bills will probably result in the replacement of the Australian Heritage Commission with the Australian Heritage Council, the repeal of the *Australian Heritage Commission Act 1975*, and amendments to the *Environmental Protection and Biodiversity Conservation Act 1999* (EPBC Act).¹⁸

Australian Heritage Commission

The Australian Heritage Commission is an independent statutory authority within the Environment and Heritage Portfolio that reports to and advises the Minister. Its functions include actions to identify, conserve and present the national estate, to promote and educate the public on matters relevant to the national estate and maintain the Register of the National Estate and advise the Commonwealth on matters relating to heritage places.¹⁹

Under proposed legislation the Australian Heritage Commission will be replaced by the Australian Heritage Council. The Council will advise the Minister on heritage matters and promote the identification, assessment and conservation of heritage. The Council will also add to and remove places from the Register of the National Estate, which will be retained in a modified form.

Register

Currently the Australian Heritage Commission maintains the Register of the National Estate (RNE). The national estate consists of those places, being components of the natural environment or the cultural environment of Australia, that have aesthetic, historic, scientific or social significance or other

¹⁸ <http://www.ahc.gov.au/infores/publications/newheritage.html> and <http://www.ahc.gov.au/news/index.html>

¹⁹ <http://www.ahc.gov.au/whoare/index.html>

special value for future generations as well as for the present community.

The new legislation proposes the creation of a National Heritage List and Commonwealth Heritage List. The first list will contain places or groups of places of outstanding national heritage significance whereas the latter will comprise places that are entirely within a Commonwealth area.²⁰ The Australian Heritage Commission will continue to add to and maintain the RNE until standards for ATSI, natural and built heritage for all states and territories are agreed to and in place. It is proposed that the RNE will be retained 'as an information resource for the purposes of heritage promotion and education'.²¹

What is included on the Register

The RNE includes natural, indigenous and built heritage places throughout Australia. In March 2001 there were 13,194 places comprising 9,935 historic places, 2,345 natural places and 914 indigenous sites.²²

To search the RNE go to <http://www.ahc.gov.au/lists/index.html>, click on [Register of the National Estate](#) or visit <http://www.ahc.gov.au/register/easydatabase/database.html>.

Criteria for inclusion on the register

A: Its importance in the course, or pattern, of Australia's natural or cultural history

A.1 Importance in the evolution of Australian flora, fauna, landscapes or climate

²⁰ <http://www.ahc.gov.au/infores/publications/newheritage.html>, National Heritage List.

²¹ Dr Kemp, Environment and Heritage Legislation Amendment Bill (No.1) 2002, Second Reading, *Hansard*, Thursday 27 June 2002, pp.3871-3783.

²² http://www.aph.gov.au/senate/committee/ecita_ctte/hert2000/Contents.htm, Senate Report on Environment and Heritage Legislation Amendment Bill (No. 2) 2000, Australian Heritage Council Bill 2000, and Australian Heritage Council (Consequential and Transitional Provisions) Bill 2000, Appendix 6.

A.2 Importance in maintaining existing processes or natural systems at the regional or national scale

A.3 Importance in exhibiting unusual richness or diversity of flora, fauna, landscapes or cultural features

A.4 Importance for association with events, developments or cultural phases which have had a significant role in the human occupation and evolution of the nation, state, region or community

B: Its possession of uncommon, rare or endangered aspects of Australia's natural or cultural history

B.1 Importance for rare, endangered or uncommon flora, fauna, communities, ecosystems, natural landscapes or phenomena, or as a wilderness

B.2 Importance in demonstrating a distinctive way of life, custom, process, land-use, function or design no longer practised, in danger of being lost, or of exceptional interest

C: Its potential to yield information that will contribute to an understanding of Australia's natural or cultural history

C.1 Importance for information contributing to a wider understanding of Australian natural history, by virtue of its use as a research site, teaching site, type locality, reference or benchmark site

C.2 Importance for information contributing to a wider understanding of the history of human occupation of Australia

D: Its importance in demonstrating the principal characteristics of: (i) a class of Australia's natural or cultural places; or (ii) a class of Australia's natural or cultural environments

D.1 Importance in demonstrating the principal characteristics of the range of landscapes, environments or ecosystems, the attributes of which identify them as being characteristic of their class

D.2 Importance in demonstrating the principal characteristics of the range of human activities in the Australian environment (including way of life, philosophy, custom, process, land use, function, design or technique)

E: Its importance in exhibiting particular aesthetic characteristics valued by a community or cultural group

E.1 Importance for a community for aesthetic characteristics held in high esteem or otherwise valued by the community

F: Its importance in demonstrating a high degree of creative or technical achievement at a particular period

F.1 Importance for its technical, creative, design or artistic excellence, innovation or achievement

G: Its strong or special associations with a particular community or cultural group for social, cultural or spiritual reasons

G.1 Importance as a place highly valued by a community for reasons of religious, spiritual, symbolic, cultural, educational, or social associations

H: Its special association with the life or works of a person, or group of persons, of importance in Australia's natural or cultural history

H.1 Importance for close associations with individuals whose activities have been significant within the history of the nation, state or region.²³

Draft criteria for proposed National Heritage List

- the place is of national importance in the past course or present pattern of nature or cultures in Australia
- the place has the potential to make a contribution of national importance to the understanding of Australia's history or environment
- the place is recognised as being of national importance for its landmark or aesthetic quality, social, spiritual or other cultural associations
- the place is a representative example with the principal characteristics of a class of places or environments of national importance to Australia
- the place is of national importance as an uncommon aspect of the history, cultures or environments of Australia

²³ <http://www.ahc.gov.au/register/furtherinfo/criteria.html>

- the place has special associations with the life or works of a person or group important to Australia
- the place demonstrates creative or technical excellence of national importance.²⁴

Responsibilities

The Australian Heritage Commission responsibilities are to identify, conserve, improve and present the national estate, assess nominations for addition to the Register, to advise and provide administration support to the Commissioners and advise the Commonwealth on matters relating to heritage places.

Anyone can nominate a place they consider to be worthy of adding to the RNE, however, under the proposed legislation, only places of outstanding national cultural heritage significance will be added to the Register.

Government heritage grant programs

Environment Australia is currently responsible for Federal Government cultural heritage grants relating to places. The annual Cultural Heritage Projects Program (CHPP) applies to private owners that own a place on a state/territory register list or RNE, local government authorities and not-for-profit incorporated organisations. They are eligible to apply for funds for conservation of a listed historic or indigenous place or to identify Indigenous place for listing.

Small sums of money are available to local government authorities and not-for-profit incorporated organisations for projects under the Commemoration of Historic Events and Famous Person program. Under this scheme, which closes to applications on 30 June each year, funding is available for monuments, exhibitions or surveys which will commemorate nationally significant persons or events.²⁵

²⁴ http://www.aph.gov.au/senate/committee/ecita_ctte/hert2000/Contents.htm,
Senate Report, Appendix 1.

²⁵ <http://www.ea.gov.au/heritage/programs/index.html>

Grants under the proposed bills provide for ‘financial or other assistance for the identification, promotion, protection or conservation’ of a Commonwealth or national heritage place.²⁶

Web page(s) and Australian Heritage Commission address

<http://www.ahc.gov.au/> is the Australian Heritage Commission home page.

<http://www.ea.gov.au/heritage/> is Environment Australia’s Heritage home page.

<http://www.ea.gov.au/heritage/programs/index.html> provides information on Grants and funding.

For more information write to the Australian Heritage Commission, GPO Box 787, Canberra ACT 2601 or phone (02) 6274 1111.

Other agencies

A new committee, the **Environment Protection and Heritage Council** (EPHC) met for the first time on 2 May 2002. The committee consists of the federal, states and territories heritage ministers and its role is to manage and protect Australia’s environment and natural, indigenous and historic cultural heritage. This includes developing an integrated national heritage policy, promoting heritage tourism and developing effective incentive for the conservation of heritage places by governments, industry and the community.²⁷

²⁶ http://www.aph.gov.au/senate/committee/ecita_cte/hert2000/Contents.htm,
Senate Report, Chapter 5 and Sections 324Y and 341ZA of the EPBC Act.

²⁷ http://www.nepc.gov.au/news_ephc.html

Australian Capital Territory

Legislation

Heritage Objects Act 1991.

Land (Planning and Environment) Act 1991

Heritage Council

The Heritage Council advises the Minister on all heritage matters in the ACT including nominations to the Australian Capital Territory Heritage Places Register. However, the Council is responsible for the Register. The Heritage Office, Environment ACT, provides administrative and operational support to this Heritage Council.



Albert Hall Canberra ACT

Photo courtesy Canberra and District Historical Society

The Albert Hall was the only theatre for the performing arts until 1967

Register

Australian Capital Territory Heritage Places Register lists places and objects that have been assessed as having heritage significance, are being assessed or are identified as having possible heritage significance.²⁸ Anyone can nominate a place or object to the Heritage Places Register.

What is included on the Register

Included on the register are natural, Aboriginal and historic places and objects of cultural heritage. The register is at <http://www.environment.act.gov.au/ie4/heritage/heritagelist.html> and it can be downloaded.

Criteria for inclusion of a place on the register

- A place which demonstrates a high degree of technical and/or creative achievement, by showing qualities of innovation or departure or representing a new achievement of its time
- A place which exhibits outstanding design or aesthetic qualities valued by the community or a cultural group
- A place which demonstrates a distinctive way of life, taste, tradition, religion, land use, custom, process, design or function which is no longer practised, is in danger of being lost, or is of exceptional interest
- A place which is highly valued by the community or a cultural group for reasons of strong or special religious, spiritual, cultural, educational or social associations
- A place which is the only known or only comparatively intact example of its type
- A place which is a notable example of a class of natural or cultural places or landscapes and which demonstrates the principal characteristics of that class

²⁸ <http://www.heritage.gov.au/index-act.html>

- A place which has strong or special associations with a person, group, event, development or cultural phase which played a significant part in local or national history
- A place which represents the evolution of a natural landscape, including significant geological features, landforms, biota or natural processes
- A place which is a significant habitat or locality for the life cycle of native species; for rare, endangered or uncommon species; for species at the limits of their natural range; or for district occurrences of species
- A place which demonstrates a likelihood of providing information which will contribute significantly to a wider understanding of natural or cultural history, by virtue of its use as a research site, teaching site, type locality or benchmark site.²⁹

Criteria for inclusion of an object on the register

- An object which demonstrates a high degree of technical and/or creative achievement, by showing qualities of innovation or departure, or representing a new achievement of its time.
- An object which exhibits outstanding design or aesthetic qualities valued by the community or a cultural group.
- An object which is evidence of a distinctive way of life, taste, tradition, religion, land use, custom, process, design or function which is no longer practised, is in danger of being lost, or is of exceptional interest.
- An object which is highly valued by the community or cultural group for reasons of strong or special religious, spiritual, cultural, educational or social associations.
- An object which is the only known or only comparatively intact example of its type.

²⁹ Heritage Places Information Sheet.

- An object which is a notable example of a class of objects and which demonstrates the principal characteristics of that class.
- An object which has strong or special associations with a person, group, event, development or cultural phase in local or national history.
- An object which is significant in understanding the evolution of natural landscapes, including significant geological features, landforms, biota, or natural processes.
- An object which has provided, or is likely to provide, information that will contribute significantly to a wider understanding of the natural or cultural history of the ACT by virtue of its value or potential value as evidence or for research or teaching.³⁰

Responsibilities

The Heritage Unit also provides heritage conservation advice, and administers the heritage provisions of the *Land (Planning and Environment) Act 1991*, which relate to the management of natural, Aboriginal and historic heritage. The Unit assists in the conservation of the Territory's cultural heritage places and objects to ensure their identification, preservation, protection, maintenance and enhancement (where appropriate) for present and future generations.³¹

Government heritage grant programs

The Unit is also responsible for the administration of the ACT Heritage Grants Program. Any incorporated not-for-profit or private organisation, community group or individual may apply for a grant. A proportion of the funding is designated for Aboriginal heritage projects and the ACT Heritage Festival. Grants are also allocated for conservation management plans for places on the register, heritage tourism, thematic studies,

³⁰ Heritage Object Information Sheet.

³¹ <http://www.heritage.gov.au/ahpi/about.html> ACT heritage register.



Powerhouse, Kingston Foreshore, ACT
Photo Courtesy Canberra and District Historical Society

community projects that promote and maintain residential precincts, and educational activities such as workshops, seminars and exhibitions.

Web pages and Territory government agency address

<http://www.heritage.gov.au/index-act.html> lists the territory government heritage agencies, database, legislation and non-statutory heritage sites with links to them.

<http://www.environment.act.gov.au/ie4/heritage/heritage.html> gives information on heritage in the ACT.

<http://www.environment.act.gov.au/ie4/heritage/heritagelist.html> has information on the heritage list.

<http://www.environment.act.gov.au/ie4/heritage/heritagegrantsandawards/heritagegrants.html> has grants information and includes excellent downloadable information sheets on criteria for heritage places and heritage objects.

For more information write to the Heritage Unit, Environment ACT, Department of Urban Services, PO Box 144, Lyneham ACT 2602 or phone (02) 6207 2161.

Non-statutory registers

National Trust of Australia (ACT) web page is <http://www.act.nationaltrust.org.au/> and you can view the Register of Classified Places at 1st Floor, North Building, Civic Square. The Trust seeks to record, protect and conserve the heritage of the ACT and surrounding region and to inform and educate its members and the general public. It works with the ACT Government as a consultant, researching and preparing nominations to the ACT Heritage Register and preparing Conservation and Management Plans. For more information write to PO Box 1144, Civic Square, ACT, 2608, phone (02) 6230 0533 or send an e-mail to info@act.nationaltrust.org.au.

New South Wales

Legislation

Heritage Act 1977

Environmental Planning and Assessment Act 1979.

National Parks and Wildlife Act 1974

Heritage Council

The Heritage Council of NSW recommends nominations for adding to the State Heritage Register to the Minister for Planning, and it is the Minister's responsibility to make the final decision and add places to the register. The Heritage Council is an advisory body and is assisted by the Heritage Office. The Council has several sub-groups that focus on special areas such as the Aboriginal heritage panel, Archaeology advisory panel and Moveable heritage panel. The Heritage Council's Approvals Committee is the consent authority for local council in respect of major changes to items listed on the State Heritage Register.

Register

A place, building, work, relic, moveable object or precinct that has historical, scientific, cultural, social, archaeological, architectural, natural or aesthetic value of state heritage significance can be added to the State Heritage Register.³² In 2002 there were approximately 1,400 items of state significance.

The State Heritage Inventory has information on more than 20,000 heritage assets and includes items identified by Local Environment Plans (LEPs), Regional Environment Plans (REPs) and everything listed on the State Heritage Register. Government policy is to divide management of heritage between local councils (locally significant items) and the Heritage Council (State significant items) and REPs are no longer updated. Anyone can nominate a place or object to the State Heritage Register, but should check if it has already been listed and the

³² http://www.austlii.edu.au/au/legis/nsw/consol_act/ha197786/s170.html

Heritage Act 1977 - Sect 4A.

applicable local statutory protection. The Heritage Office is currently trialing a more comprehensively regional identification process in the Central West with the aim to identify places representing major historical themes. This is involving the community through workshops and other consultations.

What is included on the Register

The Register lists natural, Aboriginal and historic heritage places, buildings and moveable objects. Historic heritage includes public buildings, shops, factories, small and large houses, religious buildings, monuments, schools, gardens, jetties, bridges, archaeological sites and moveable items such as ferries and church organs that are of state heritage significance.³³

To search the [Register](http://www.heritage.nsw.gov.au) go to <http://www.heritage.nsw.gov.au> and click on Listing heritage items, and read down the page, then click on State Heritage Register and page down to fill in the necessary fields. Or you can go to http://www.spherion.com.au/heritage/inventory/search/search_sh_r.cfm. You need to page down and fill in the fields you want.

If you want to search the [Inventory](http://www.spherion.com.au/heritage/inventory/search/search.cfm) go to <http://www.spherion.com.au/heritage/inventory/search/search.cfm> and page down to fill in the fields you want. The Inventory mainly lists historic buildings but does include some historical and maritime archaeological and industrial sites, landscapes, gardens, heritage items owned by State Government agencies, natural heritage sites, moveable objects like machinery, vehicles and furniture, and Aboriginal heritage.³⁴

Criteria for inclusion on the register

- an item is important in the course, or pattern, of NSW's cultural or natural history

³³ http://www.heritage.nsw.gov.au/07_index.htm also http://www.heritage.nsw.gov.au/bnav07_index.htm

³⁴ http://www.heritage.nsw.gov.au/07_index.htm

- an item has strong or special association with the life or works of a person, or group of persons, of importance in NSW's cultural or natural history
- an item is important in demonstrating aesthetic characteristics and/or a high degree of creative or technical achievement in NSW
- an item has strong or special association with a particular community or cultural group in NSW for social, cultural or spiritual reasons
- an item has potential to yield information that will contribute to an understanding of NSW's cultural or natural history
- an item possesses uncommon, rare or endangered aspects of NSW's cultural or natural history
- an item is important in demonstrating the principal characteristics of a class of NSW's
 - cultural or natural places; or
 - cultural or natural environments.³⁵

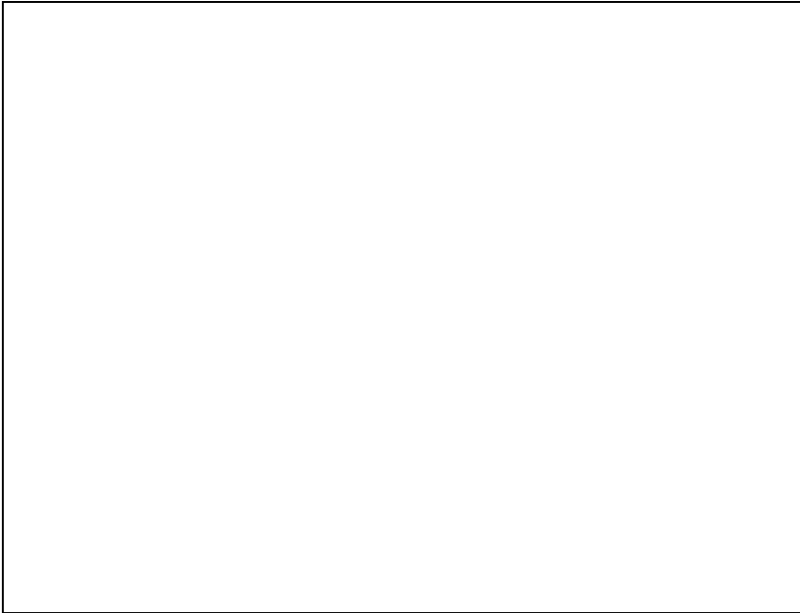
Responsibilities

The Heritage Office advises and supports the Heritage Council, maintains the State Heritage Inventory and State Heritage Register, produces publications on heritage policy and guidelines and manages heritage grant schemes.

Government heritage grant programs

The Heritage Incentives Program is a biennial program and is closed until late 2003. The program assists with funds for identification, interpretation, conservation, local history and Aboriginal heritage projects. Funding for heritage studies and promotional projects include thematic studies, promotion projects, publications, interpretation and presentations, histories and other projects related to heritage items in the state. This funding is available to organisations such as Historical Societies and individuals with an interest in the state's heritage. Funding is

³⁵ <http://www.heritage.nsw.gov.au/docs/criteria.pdf> Heritage listings



'Excursion to Camp Cove, 1934'.

This image shows members and councilors of the Royal Australian Historical Society gathered around a monument at Camp Cove which the RAHS raised to commemorate the historic site where Governor Phillip camped upon entering Port Jackson with the First Fleet. This highlights how the RAHS, in a period before the advent of the National trust and other historical organisations had already begun the task of identifying important heritage sites, marking them with monuments and visiting them with excursions to continue awareness of the importance of these areas. The RAHS in the period between 1919 and 1962 had arranged the placement of at least 36 markers, usually with the assistance of local government.

[RAHS Photo Collection No.21806.020]

also provided to local councils for community-based heritage studies.

Priority for 2002-2004 will be for cultural tourism and projects that revitalise, enhance, interpret and/or promote precincts, areas or villages and Aboriginal or ethnic community heritage projects.³⁶ A good way to identify and protect local heritage assets is by the researching, writing and publishing of a local heritage walk or drive tour.

For specific heritage projects connected with Aboriginal, archaeological/industrial, gardens, landscapes, maritime archaeology, moveable heritage or archives contact the NSW Heritage Office.³⁷

Web page(s) and state government agency address

<http://www.heritage.gov.au/index-nsw.html> lists state government heritage agencies, database, legislation and non-statutory heritage sites with links to them.

<http://www.heritage.nsw.gov.au> is the Heritage Office home page, click on the links for information such as Heritage listings.

http://www.heritage.nsw.gov.au/02_index.htm is the introductory heritage funding web page.

http://www.heritage.nsw.gov.au/02_subnav_01.htm provides information for financial assistance through the Heritage Office.

http://www.heritage.nsw.gov.au/02_subnav_02.htm has information on other sources of government heritage assistance such as items owned by State Rail, conservation of war memorials, community documentary heritage, museum and moveable items and archives.

http://www.heritage.nsw.gov.au/bnav07_index.htm the Frequently Asked Questions (FAQ) web page is very helpful and

³⁶ http://www.heritage.nsw.gov.au/02_subnav_01.htm

³⁷ http://www.heritage.nsw.gov.au/02_subnav_01.htm

includes facts on Aboriginal heritage, shipwrecks, moveable heritage and historical archaeology.

http://www.heritage.nsw.gov.au/14_index.htm explains what Aboriginal heritage is and how it is protected.

http://www.heritage.nsw.gov.au/09_index.htm, is a web page on **moveable heritage** that includes a definition, explains why moveable heritage is important and provides sources of information.

For more information write to the Heritage Office, 2-10 Wentworth Street (Level 11), Parramatta NSW 2150 or ring (02) 9635 6155.

Other statutory listings

http://www.heritage.nsw.gov.au/08_index.htm provides information on local government resources and you can either view or download *Local Government Heritage Guidelines*.

Each state government agency is required to keep a Heritage and Conservation Heritage Register of assets owned, occupied or maintained by the agency. These registers identify buildings but can include structures, moveable and Aboriginal heritage. Items of state significance are included on the State Heritage Register. The public has access free-of-charge to these Registers, but for copies/searches government agencies can set a fee.³⁸

Local government authorities Local Environmental Plans (LEPs).

Many local councils provide small grants and/or loans to assist heritage projects and many have the assistance of heritage advisors who are able to help locals with free advice.³⁹

An Aboriginal Sites Register is maintained by the NSW National Parks and Wildlife Service, while sites of great significance can

³⁸ http://www.austlii.edu.au/au/legis/nsw/consol_act/ha197786/s170.html
Heritage Act 1977 - Sect 170.

³⁹ http://www.heritage.nsw.gov.au/02_index.htm

be listed on the Heritage Register.⁴⁰ For more information visit <http://www.npws.nsw.gov.au/aboriginal/index.html> or contact 43 Bridge Street, (PO Box 1967), Hurstville 2220 or ring (02) 9585 6444.

Non-statutory registers

[National Trust of Australia \(NSW\)](http://www.nsw.nationaltrust.org.au/) home pages is <http://www.nsw.nationaltrust.org.au/>. The Trust lists a variety of environmental, natural and historic items ranging from beautiful buildings and small structures to fairy penguins and gum trees. Head office has a part-time officer who can assist with advice on cemetery and industrial heritage. For more information write to GPO Box 518, Sydney 2001, telephone (02) 9258 0123 or send an e-mail to admin@nsw.nationaltrust.org.au.

The [Twentieth Century Heritage Society of NSW](http://www.wolfweb.com.au/twentieth/) can be found at <http://www.wolfweb.com.au/twentieth/> or write to The Twentieth Century Heritage Society of NSW, PO Box Q1072 East Ryde NSW 2113. The phone number is (02) 9878 2511.

[Historic Houses Trust of New South Wales](http://www.hht.nsw.gov.au/) web site is <http://www.hht.nsw.gov.au/> and the Trust has a Conservation Resource Centre that was established to record the history of houses, furnishings and gardens of New South Wales. The Trust provides information, original source material and specialist services relating to domestic design history and building conservation. The research library in the Resource Centre has an important collection of architectural and furnishing pattern books, department store and trade catalogues, journals, pamphlets, charts and archival material, as well as reference books and current periodicals, interior decoration, furniture and garden ornaments. For information the postal address is Lyndhurst, 61 Dargham St, Glebe NSW 2037. The telephone number is (02) 9692 8366.⁴¹

⁴⁰ <http://www.npws.nsw.gov.au/aboriginal/index.html>

⁴¹ Stephanie Sparke and the Historic Houses Trust of New south Wales web pages.

The NSW Professional Historians Association ([PHA \(NSW\) Inc](#)) publishes an electronic heritage register of places and objects identified by members in the course of their work as having high values of historical significance to NSW and the ACT. This *Register of historic places and objects* can be visited online at <http://www.phansw.org.au/Publications/rohpo.html> and includes places as varied as the Brewarrina fish traps, parks and shipwrecks to hospital wards and schools. The Register is incorporated in the State Heritage Inventory.

Other agencies and grants

The [Royal Australian Historical Society](#) administers two small grant schemes and these are outlined at <http://www.rahs.org.au/grants.html>. The Heritage Grants are funded by the NSW Heritage Office and support programs that assist with the publication of local history materials which promote heritage or assist with the conservation of local history archival collections. The Society also administers a fund on behalf of the NSW Ministry for the Arts which assists with the research, writing and publication of local history. For more information phone (02) 9247 8001.

The **Museums and Galleries Foundation of NSW** ([MGFNSW](#)) is the principal service provider for the museums and galleries sector in NSW. They can advise on a range of museological topics including display, storage, care and interpretation of items in museums, historical societies and galleries. For further particulars visit <http://www.mgfnsw.org.au/> and click on Services or try <http://www.mgfnsw.org.au/services/services.php>. The Foundation also operates a program of professional development opportunities including workshops and events around the state as well as touring exhibitions, conducting site visits and offering a distance advice service.

The Foundation has recently introduced the Regional Museums Advisory Service to assist in the development of regional museums through the placement of professional advisers to work with local government authorities. The Foundation also runs the

Volunteer Initiated Museums Grant Program. Projects eligible for funding include preventive conservation, professional development and community liaisons. The latter could include oral history projects or special program activities. Applicants must be an incorporated volunteer operated museum.

More information is available at <http://mgfnsw.org.au/resources/Grants/info.php>. <http://mgfnsw.org.au/resources/resources.php> is the Foundation web page. Click on Grants, then Grants and Funding sources available to Museums and Galleries for an annotated list of funding sources for NSW or phone (02) 9358 1760. Or write to Museums & Galleries Foundation of NSW, 43-51 Cowper Wharf Road, Woolloomooloo NSW 2011, or phone (02) 9358 1760.

The NSW Ministry for the Arts administers the **Cultural Grants Program**. Through its Museums program the Ministry assists NSW museums with funding for activities which lead to higher standards of practice and greater service to the community. Through its Literature and History Program the Ministry assists NSW historical societies which offer professional services and development projects to members of the historical community. Visit <http://www.arts.nsw.gov.au/Guidelines/guidelines.htm> for more information or telephone (02) 9228 5533 or use the Toll Free number (in NSW) 1800 358 594 or write to the NSW Ministry for the Arts. PO Box A226, Sydney South NSW 1235.

Of interest are the NSW Premier's [History Awards](http://www.arts.nsw.gov.au/awards/HistoryAwards/historyaward.s.htm) conducted in association with the History Council of New South Wales. Visit <http://www.arts.nsw.gov.au/awards/HistoryAwards/historyaward.s.htm> and then if you click on NSW History Fellowship. On this web page you will find that this funding is offered annually by the Government to assist a person living in New South Wales to research and produce a work on a subject of historical interest relating to New South Wales. If you click on NSW Indigenous History Fellowship you will find details of the biennial fellowship which is intended to assist a person living in NSW to produce a work on a subject of historical interest relating to

NSW from an Aboriginal point of view. For more details contact the NSW Ministry for the Arts.⁴²

Royal Australian Institute of Architects NSW Chapter has been listing outstanding buildings since 1949. Since 1968 the NSW Chapter has focused on 20th century buildings. With funding from the NSW Heritage Office the Register of 20th century buildings of significance has been further enhanced and should be available on the web soon.

⁴² Elaine Lindsay, NSW Ministry for the Arts and
<http://www.arts.nsw.gov.au/awards/HistoryAwards/historyawards.htm>

Northern Territory

Legislation

Heritage Conservation Act 1991

Heritage Conservation Amendment Act 1998

Northern Territory Aboriginal Sacred Sites Act 1989

The Northern Territory *Heritage Conservation Act 1991* provides a system for the identification, assessment, protection and conservation of the Territory's natural and cultural heritage. Such heritage includes fossils, buildings, gardens, ruins, archaeological sites, landscapes, ecosystems, coastlines, plant and animal communities.

Heritage Advisory Council

The Heritage Advisory Council (HAC) is a nine-member body established under the *Heritage Conservation Act* which has a range of functions that may be broadly summarised as advising the Minister on all matters affecting the natural and cultural heritage of the Territory. This includes carrying out research and evaluating the heritage value of places/objects nominated to the Heritage Register, advising the Minister on the conservation and use of heritage places/objects, promoting public appreciation and use of the Territory's heritage where appropriate, preparing conservation management plans, advising the Minister on financial incentives for heritage conservation and so on.

Register

The Northern Territory Heritage Register (NTHR) lists all the places and objects declared to be heritage places and objects by the Minister. It also includes interim conservation orders, conservation management plans and heritage agreements.

Place refers to any part of the cultural and natural environment having a fixed location: including natural areas and their flora and fauna; architectural and industrial sites and structures;

Aboriginal and other non-European sites; archaeological sites; cultural landscapes and townscapes; geological sites.⁴³

What is included on the Register

The NTHR includes places and objects of pre-historic, proto-historic, historic, social, aesthetic or scientific value to the Territory. As indicated above, places and objects may be natural features, archaeological sites, buildings, gardens, landscapes, coastlines, and plant and animal communities or ecosystems.⁴⁴ For example the NTHR currently includes such diverse places as the Alcoota Fossil Beds, Darwin Botanic Gardens, MacClark (Acacia peuce) Conservation Reserve, Alice Springs Heritage Precinct, Bamboo Creek Tin Mine, Brocks Creek Cemetery, Old Hamilton Downs Station and WWII Shipwrecks.

The [NTHR](http://www.lpe.nt.gov.au/heritage/register/list/default.htm) is available on line and can be searched from the government's heritage web page at <http://www.lpe.nt.gov.au/heritage/register/list/default.htm> an alphabetical listing of declared places and objects. At <http://www.lpe.nt.gov.au/heritage/register/default.htm> you can search by selecting a category such as declared places and objects, nominations, proposed recommendations or heritage agreements.

Anyone can nominate a place or object to the Heritage Register by completing a nomination form available from Heritage Conservation Services. The Heritage Advisory Council then assesses that place/object against the heritage assessment criteria and makes recommendations to the Minister accordingly, following a period of public comment and consultation.

Criteria for inclusion of a place or object on the register

The criteria for inclusion of a place or object on the NTHR are specified in the Regulations of the *Heritage Conservation Act*. According to the Regulations a place/object must be of *special*

⁴³ <http://www.lpe.nt.gov.au/HERITAGE/grants/default.html>

⁴⁴ <http://www.lpe.nt.gov.au/heritage>

significance to the Territory and meet at least one of the following criteria:

- for the evolution of flora, fauna, landscape or climate;
- because of the diversity or richness of its flora, fauna, landscapes or cultural features;
- because it contains rare, endangered or uncommon flora, fauna, biotic communities, ecosystems, natural landscapes or phenomena;
- in demonstrating the principal characteristics of the range of landscapes, environments or ecosystems, the attributes of which identify them as being characteristic of their class;
- as wilderness;
- for the maintenance of existing natural processes or systems;
- because it contributes to a wider understanding of natural history by virtue of its use as a research site, a teaching site, an example of a type of locality or reference area;
- by virtue of its association with events, developments or cultural phases in human occupation and evolution;
- by providing information contributing to a broader understanding of the history of human occupation;
- in demonstrating a way of life, custom, process, land use, function or design no longer practised, in danger of being lost or of exceptional interest;
- in demonstrating the principal characteristics of the range of human activities which take or have taken place in the Territory, including ways of life, customs, processes, land uses, functions, designs or techniques;
- by virtue of aesthetic characteristics or through technical, creative, design or artistic excellence, innovation or achievement held in high esteem or otherwise valued by a community;
- in being highly valued by a community for religious, spiritual, symbolic, cultural, educational or social associations; or

- through its close association with individuals whose activities have been significant in the history of the Territory.

Responsibilities

Heritage Conservation Services (HCS) is part of the Office of Environment and Heritage, situated within the Department of Infrastructure, Planning and Environment. Services provided by Heritage Conservation includes:

- Searches of the NT Heritage Register and Archaeological Resource Database,
- Advice on the nomination and assessment process for places and objects nominated to the NT Heritage Register,
- Advice on the impact of various development proposals on the Territory's heritage,
- Processing of the rate rebates for owners of declared heritage places,
- Processing of applications to undertake research on archaeological sites,
- Provision of scope of works for archaeological surveys prior to development projects and contact details for consultant archaeologists,
- Advice regarding the most appropriate methods of conserving archaeological sites, including both short and long term management strategies,
- Advice regarding the interpretation and presentation of sites for visitors.
- Processing of applications to undertake works on declared heritage places and objects,
- Advice on the most practical ways to conserve heritage places,
- Advice on the compatible or adaptive re-use of heritage places,
- Access to the free conservation specialist advice service available to owners of heritage places and objects,
- Assist with the development of conservation and management plans,

- Advice regarding the interpretation and presentation of sites for visitors.
- Processing NT Heritage Grant applications,
- Assistance with developing grant applications, and
- Provision of a Secretariat function for HAC.

Government heritage grant programs

The NT Heritage Grant Program (NTHGP) is an annual funding program that provides monies for the conservation, documentation and promotion of the Territory's heritage. Further information regarding the NTHGP including eligibility criteria and current Ministerial priorities is available on-line at <http://www.lpe.nt.gov.au/heritage/grants/default.htm>.

The Northern Territory Government has agreed to fund a dedicated indigenous tourism development officer to promote and expand Aboriginal tourism opportunities for the Territory.

Web page(s) and Territory government agency address

<http://www.heritage.gov.au/index-nt.html> lists the territory government heritage agencies, database, legislation and non-statutory heritage sites with links to them.

<http://www.lpe.nt.gov.au/heritage> has information on legislation, the NTHR and Heritage Advisory Council and has links to relevant web pages including the Territory's grant program.

For more information write to the Heritage Conservation Services, Office of Environment and Heritage, Department of Infrastructure, Planning and Environment, GPO Box 1680, Darwin NT 0801 or phone (08) 8924 4143.

Other statutory listings

The Aboriginal Areas Protection Authority ([AAPA](#)) maintains a register of Aboriginal sacred sites. Visit <http://www.nt.gov.au/aapa/text/contents.htm> or ring (08) 8981 4700 for more information.

Non-statutory registers

[National Trust of Australia \(NT\)](http://www.northernexposure.com.au/nationaltrust.html) web page is <http://www.northernexposure.com.au/nationaltrust.html> and postal address is National Trust of Australia (NT), GPO Box 3520, Darwin NT 0801. The telephone number is (08) 8981 2848 and e-mail national.trust@octa4.net.au. Places identified by the Trust have an entry on the heritage register database, the entry includes the status.

Other agencies and grants

The **Museum and Art Gallery of the Northern Territory (MAGNT)** provides professional advice, information and assistance in all aspects of museums practice through its Regional Museums Support Program. Grant funding is provided to Northern Territory museums and keeping places through the Regional Museums Grant Support Program. This program funds projects that assist community based and volunteer run museums in the preservation, collection and interpretation of community heritage. For further details visit http://www.nt.gov.au/cdsca/dam/magnt_regio.htm or telephone (08) 8999 8161. The contact address is Regional Museums Support Officer, Museums and Art Galleries of the NT, PO Box 4646, Darwin NT 0801.⁴⁵

History grants from the [Northern Territory Archives Services](#) may be a useful source of funding to assist identifying and researching heritage places. Offered on an annual basis in the form of monetary grants, they are designed to encourage and support the work of researchers who are recording and writing about Territory history. Information is at http://www.nt.gov.au/dcis/nta/7_history/history.htm. For further details write to the Northern Territory Archives Service, GPO Box 874, Darwin NT 0801 or ring (08) 8924 7677.

⁴⁵ http://www.nt.gov.au/cdsca/dam/magnt_regio.htm

Queensland

Legislation

Queensland Heritage Act 1992

The Cultural Record (Landscapes Queensland and Queensland Estate) Act 1987

Heritage Council

The Queensland Heritage Council comprises experts and nominees from various organisations who are appointed by the Minister. The Council assesses entries for and administers the Heritage Register and advises the Minister on matters relating to the state's cultural heritage. The Council is assisted by the Cultural Heritage Branch.

Register

The Queensland Heritage Register is a list of places of cultural heritage significance to qld, maintained by the Queensland Heritage Council. In March 2002 there were 1,332 places entered in the register. While anyone can nominate a place to the Heritage Register, they must provide sufficient information to show that the place has heritage significance. A strength of the Act is that the Minister for Environment can impose Stop Work orders to stop the removal or destruction of a place.

What is included on the Register

The Queensland Heritage Register lists places of aesthetic, architectural, historical, scientific or social significance or other special value, to the present community and future generations. Place can include buildings, groups of buildings, gardens, trees and natural features of historic significance.

Go to <http://www.epa.qld.gov.au/environment/culture/register/> and by clicking on the words 'View summary information on places in the Queensland Heritage Register' you can search for listed places.

Criteria for inclusion on the register

- (a) the place is important in demonstrating the evolution or pattern of Queensland's history
- (b) the place demonstrates rare, uncommon, or endangered aspects of Queensland's cultural heritage
- (c) the place has potential to yield information that will contribute to the understanding of Queensland's history
- (d) the place is important in demonstrating the principal characteristics of a particular class of places
- (e) the place is important because of its aesthetic significance
- (f) the place is important in demonstrating a high degree of creative achievement at a particular period
- (g) the place has a strong or special association with a particular community or cultural group for social, cultural, or spiritual reasons.⁴⁶

Responsibilities

The Cultural Heritage Branch of the Environmental Protection Agency (EPA) supports the Heritage Council by assessing nominations to the QHR, and assessing development applications for places entered in the Queensland Heritage Register. The *Queensland Heritage Act* also has provisions for protection of cultural relics.

Government heritage grant programs

The Cultural Heritage Branch manages the Queensland Community Cultural Heritage Incentive Program. This scheme offers limited funding for indigenous and historical projects, identifying and documenting potential places of cultural significance, projects that research the history and links between people and places, and conserving places of cultural heritage significance.

⁴⁶ <http://www.epa.qld.gov.au/environment/culture/registers/gotr.html>

Web page(s) and state government agency address

<http://www.heritage.gov.au/index.q1.html> lists state government heritage agencies, database, legislation and non-statutory heritage sites with links to them.

<http://www.epa.qld.gov.au/environment/culture/> is the home page for the Cultural Heritage Branch.

<http://www.epa.qld.gov.au/environment/culture/grants/> has current information on the Community Cultural Heritage Incentive Program. This scheme funds both indigenous and historical projects. The emphasis can vary from year, for more details click on [Grants](#).

For more information write to the Cultural Heritage Branch, Environmental Protection Agency, PO Box 155, Brisbane Albert Street Qld 4002 or ring (07) 3227 6496

Other statutory listings

Under the *Integrated Planning Act 1997* (IPA) local governments are required to identify valuable features and acknowledge in planning schemes. Local government registers are becoming more common. Some local governments employ heritage advisors who can provide free advice to locals and some local governments have heritage/history grants programs. Check with your local authority for what assistance they can provide and if they have any relevant publications.

The *Cultural Record (Landscapes Queensland and Queensland Estate) Act 1987* protects all historical heritage and is the main legislation that protects ATSI cultural heritage. The Cultural Heritage Branch of the EPA currently administers this Act. New indigenous cultural heritage legislation is expected in the near future.

Non-statutory registers

[National Trust of Queensland](http://www.nationaltrustqld.org/) web page is at <http://www.nationaltrustqld.org/>. The Trust concentrates on built heritage. However, its register includes landscapes, natural sites

and precincts. It also has a Tree Register. The Trust's postal address is GPO Box 538, Brisbane Qld 4001, phone number (07) 3229 1788 and e-mail address is info@nationaltrust.qld.org.

Other agencies and grants

The **Queensland Gambling Community Benefit Fund** provides grants to community based organisations to help them provide services and activities within their local communities. For more information visit <http://www.gcbf.qld.gov.au/> or ring the Secretariat on (07) 3247 4284 or 1800 633 619.

Each casino in Queensland also has a community benefit fund. Applicants must show a high level of community involvement. Grants are generally for facilities or services and the proposal must have an obvious community benefit. Thinking laterally the application could argue that by identifying and researching places of heritage value you would assist the locality's cultural tourism which is an obvious community benefit.

Phone numbers and/or web pages for information about the casino benefit in your area are:

- Breakwater Island Casino Community Benefit Fund (07) 4721 1453
- Jupiters Casino Community Benefit Fund (07) 3808 7444, <http://www.jccbf.org.au/>
- The Reef Hotel Casino Community Benefit Fund (07) 4030 8888, <http://www.cairnscasinocbf.com>

The [Queensland Council of Social Services](http://www.qcross.org.au) (QCOSS) regularly produces a 280-page publication that lists funding programs from a range of sources including commonwealth, state and local government grants as well as private and philanthropic funds. This useful book also includes how to make successful grant applications. *The funding resource manual: The essential resource for community organisations, governments and individuals in Queensland* is available on the web at <http://www.qcross.org.au> then click on Funding resources on line or inquire about the latest version by ringing (07) 3832 1266, or write to PO Box 306, Red Hill Qld 4059.

South Australia

Legislation

Heritage Act 1993

Historic Shipwrecks Act 1981

Aboriginal Heritage Act 1988

Heritage Council

The State Heritage Authority is an independent group of eight members with various expertise in cultural heritage and management. The Authority, supported by Heritage South Australia staff, offers advice to the Minister on heritage matters, administers the State Heritage Register and is responsible for adding and removing places in the Register.⁴⁷

Register

The State Heritage Register lists places of state significance. The Register database also includes an inventory containing places of local heritage value listed in any Development Plan, places included on the Register of the National Estate and State Heritage Areas. The Inventory also includes all heritage agreements and variations to such agreements. Places registered as of local heritage value are managed by the local government authority and Planning SA. For further information on the register see <http://www.environment.sa.gov.au/heritage/register.html>.

Any individual or organisation can nominate a place to the State Heritage Register. Places are also recommended for the register through heritage surveys.⁴⁸ At 30 June 2002 there were 2,182 places entered in the register.

What is included on the Register

South Australia's State Heritage Register lists mainly built environment places, including buildings, industrial and mining sites, monuments and cemeteries. Geological, archaeological and palaeontological areas can also be listed. State Heritage Areas

⁴⁷ <http://www.environment.sa.gov.au/heritage/faqs.html>

⁴⁸ <http://www.environment.sa.gov.au/heritage/register.html>

include towns such as Goolwa, Burra and Port Adelaide. Maritime heritage includes land-based items such as lighthouses, jetties, former sealing and whaling stations and underwater heritage sites like shipwrecks.⁴⁹

To find information about listed places you need to go to <http://www.heritage.gov.au/ahpi/about.html>, click on Search to search by placename, street address, town and/or local government area. You do not need to fill in each field. For example you could find all the places in Adelaide or some other local government area. Key word searches are also available for the statements of significance and the descriptions.⁵⁰

Criteria for inclusion on the Register

A place must meet at least one of the following criteria to be eligible for entry.

- It demonstrates important aspects of the evolution or pattern of the State's history.
- It has rare, uncommon or endangered qualities that are of cultural significance.
- It may yield information that will contribute to an understanding of the State's history, including its natural history.
- It is an outstanding representative of a particular class of places of cultural significance.
- It demonstrates a high degree of creative, aesthetic or technical accomplishment or is an outstanding representative of particular construction techniques or design characteristics.
- It has strong cultural or spiritual associations for the community or a group within it.
- It has a special association with the life or work of a person or organisation or an event of historical importance.⁵¹

⁴⁹ <http://www.environment.sa.gov.au/heritage/faqs.html> and <http://www.environment.sa.gov.au/heritage/maritime.html>

⁵⁰ <http://www.heritage.gov.au/ahpi/about.html>

⁵¹ <http://www.environment.sa.gov.au/heritage/register.html>

Responsibilities

Heritage South Australia is a branch of the Department of Environment and Heritage. It provides administrative and policy support to the State Heritage Authority, gives heritage advice to the Minister and administers the State Heritage Fund. The branch manages heritage surveys and assessment programs, maintains the Register, provides advice to local councils and government about development proposals affecting state heritage places, supplies conservation advice and information to owners and occupiers of listed places, and promotes community awareness programs through publications and public speaking.⁵²

Government heritage grant programs

Heritage South Australia administers the State Heritage Fund. Eligible projects include heritage surveys to identify places of cultural heritage significance that might be affected by new development or where a Development Plan is being prepared; conservation work on places on the State Heritage Register; financial assistance to a local council to appoint a heritage advisor; and skills development projects. Check out <http://www.environment.sa.gov.au/heritage/grants.html>.

Web page(s) and state government agency address

<http://www.heritage.gov.au/index-sa.html> lists state government heritage agencies, database, legislation and non-statutory heritage sites with links to them.

<http://www.environment.sa.gov.au/heritage> is the main web page with links to other relevant pages. <http://www.environment.sa.gov.au/heritage/faqs.html> provides many answers to common questions.

For more information write to Heritage SA, GPO Box 1047, Adelaide SA 5001 or ring (08) 8204 9299.

⁵² <http://www.environment.sa.gov.au/heritage/authority.html> and <http://www.environment.sa.gov.au/heritage/faqs.html>

Other statutory listings

The S.A. Department of State Aboriginal Affairs, which is a unit of the Department of Administration and Administrative Services, maintains a central archive of information pertaining to Aboriginal sites. The address is GPO Box 3140 Adelaide, SA 5000. Information is available from <http://www.dosaa.sa.gov.au> or telephone (08) 8226 8900.

Moveable cultural heritage items are the responsibility of government agencies such as the History Trust of South Australia and the South Australian Museum.⁵³

Local councils can protect places of local heritage value by listing them in their Development Plans.

Non-Statutory registers

The [National Trust South Australia](http://www.nationaltrustsa.org.au/) home page is at <http://www.nationaltrustsa.org.au/>. The Trust closed its register in 1989. However, it recently created a new program of ‘listing’ movable heritage items and concepts such as the Hills hoist, the Burra jinker, Balfour’s Frog Cake and Glenelg tram. The Trust lobbies to conserve and preserve the states heritage and works in strategic partnership with local, state and federal government on heritage based tourism and community facilities. The Trust can be contacted by writing to P.O. Box 8147, Station Arcade, Adelaide SA 5000 or phoning (08) 8212 1133.

Other agencies and grants

Under the *Development Act 1993* all development applications affecting places listed on the State Heritage Register must be referred to the Minister responsible for the Heritage Act.⁵⁴

The City of Adelaide makes grants to heritage places through its Heritage Incentive Scheme, for more information ring (08) 8203 7260.⁵⁵

⁵³ <http://www.environment.sa.gov.au/heritage/faqs.html>

⁵⁴ <http://www.denr.sa.gov.au/heritage/built.html>



Garran's Picturesque Atlas of Australasia, one of three volumes published London 1886

Photo courtesy Royal Western Australian Historical Society

⁵⁵ <http://www.environment.sa.gov.au/heritage/grants.html>, City of Adelaide Heritage Incentive Scheme

Check with your local government for any schemes or publications they may have.

The [History Trust of South Australia](#) has two [grant](#) schemes:

- Community History Grants – Small Projects is for small community history projects such as marking heritage trails and projects that interpret history in the community. Funding is for only a portion of the full cost.
- Community History Grants – Publications were established to assist in the publication of books, pamphlets and other media that promote the preservation and promotion of South Australia's history regionally, locally or aimed at specialist audiences. Grants of up to \$3,000 can be used to help purchase photographs, employment of a professional historian and/or editor and publishing costs. More information is available at <http://www.history.sa.gov.au/htsa/htsa-grants.htm> or ring (08) 8226 8555 or write to the History Trust of South Australia, GPO Box 1836, Adelaide SA 5000.

Tasmania

Legislation

Historic Cultural Heritage Act 1995

Historic Cultural Heritage Amendment Act 1997

Heritage Council

The Tasmanian Heritage Council is a statutory body appointed by the Minister of the Department of Primary Industries, Water and Environment. It consists of 15 people with expertise in various aspects of cultural heritage, rural environment and tourism. The Council is assisted by the Heritage Council Secretariat. The Council is responsible for conserving Tasmania's historic cultural heritage, encouraging proper management of places with cultural heritage significance, encouraging public interest in and understanding of historic places and assisting with promotion of tourism with regard to historic places.

Register

The Heritage Register list includes about 5,000 historic places and is available on CD-Rom. The Registration Committee is a subcommittee of the Council and it assesses nominations for recommendation to the full Council. Additions to the register are entirely at the discretion of the Heritage Council. Any one can nominate a place to the register.

What is included on the Register

The Heritage Register is a listing of places of historic cultural heritage. Place can include not just a building or part of a building, site, precinct or parcel of land but also any shipwreck and item or equipment associated or connected to a place.

For information about listed places visit <http://www.heritage.gov.au/ahpi/about.html>, click on Search to search by placename, street address, town and/or local government area. You do not need to fill in each field. For example you could find all the places in Launceston or some

other local government area. Key word searches are also available for the statements of significance and the descriptions.⁵⁶

Criteria for inclusion on the register

- it is important in demonstrating the evolution or pattern of Tasmania's history
- it demonstrates rare, uncommon or endangered aspects of Tasmania's heritage
- it has potential to yield information that will contribute to an understanding of Tasmania's history
- it is important as a representative in demonstrating the characteristics of a broader class of cultural places
- it is important in demonstrating a high degree of technical achievement
- it has a strong or special meaning for any group or community because of social, cultural or spiritual associations
- it has special association with the life or work of a person, group or an organisation that was important in Tasmania's history.⁵⁷

Responsibilities

The Secretariat administers the register, provides conservation advice to owners of listed places, government and community organisations, makes recommendations regarding nominated places to the Council and advises on development applications.

Government heritage grant programs

The Heritage Fund is administered by the Heritage Council with funding available for conservation of places on the Heritage Register or eligible for adding to the register outside of Hobart. Heritage studies that will result in nominations to the register may be eligible for funding under the scheme, especially if they

⁵⁶ <http://www.heritage.gov.au/ahpi/about.html>

⁵⁷ <http://www.tasheritage.tas.gov.au/>, FAQ

are jointly funded by the local government authority.⁵⁸ Historical societies working with their local government authority can apply for such grants. Utilising the society's records and members local knowledge can enrich heritage studies and the resulting documentation will add to the society's records.

Web page(s) and state government agency address

<http://www.heritage.gov.au/index-tas.html> lists state government heritage agencies, database, legislation and non-statutory heritage sites with links to them.

<http://www.tasheritage.tas.gov.au/> is the Tasmanian Heritage Council home page. Use the links down the left hand side of the web page to find out information about the council, register and funding. Check out the Frequently Asked Questions (FAQ) for brief explanations on a variety of topics.

<http://www.tasheritage.tas.gov.au/HeritageFund.php> has useful information on heritage grants, for further details and if you have Adobe Reader click on Funding in the left-hand margin.

For more information write to the Tasmanian Heritage Council, GPO Box 618, Hobart Tas 7001 or ring (03) 6233 2037.

Other statutory listings

The Department of Primary Industries, Water and Environment is responsible for heritage conservation, managing National Parks and government owned heritage assets, protecting Aboriginal sites and relics and planning.

Check your local government authority for information about identified local places and local grants.

⁵⁸ <http://www.tasheritage.tas.gov.au/HeritageFund.php>

Non-statutory registers

[National Trust of Australia \(Tasmania\)](http://www.tased.edu.au/tasonline/nattrust/) web address is <http://www.tased.edu.au/tasonline/nattrust/> or for more information write to PO Box 711, Launceston, Tas, 7250, phone (03) 6344 6233 or send an e-mail to nat_trust@vision.net.au.

Other agencies and grants

<http://www.statelibrary.tas.gov.au/Heritage/grants.htm> provides information about grants for Tasmanians only and other Australian sources. For more information on what the library offers write to State Library of Tasmania, 91 Murray Street, Hobart TAS 7000 or telephone either (03) 6233 7462 or (03) 6233 6815.

<http://www.statelibrary.tas.gov.au/eheritage/publications.htm> supplies information on caring for and assessing the significance of objects and collections.

<http://www.tas.gov.au/Nav/Topic.asp?Topic=History+and+genealogy> is useful for finding out about Tasmanian historic resources and many other history related topics.

<http://www.statelibrary.tas.gov.au/eheritage/abouteheritage.htm> has information to assist Tasmania's local history societies in the use of technology and innovation including cultural tourism.

<http://www.arts.tas.gov.au/> has links to current Grant programs including those for Small museums and Local history publication fund.

The [Tasmanian Community Fund](http://www.tascomfund.org/index.html) makes grants available to a diverse range of organisations within the community. At <http://www.tascomfund.org/index.html> you will find [Guidelines](#) and the [application form](#) for grants. Thinking laterally the application could argue that by identifying and researching places of heritage value you would assist the localities cultural tourism, which is an obvious community benefit. This organisation can be contacted by ringing (03) 62 33 2800 or writing to GPO Box, 1350, Hobart TAS 7001.

<http://www.hobartcity.com.au/grants/index.htm> has details about community and cultural grants from the Hobart City Council, for

more information phone either (03) 6238 2883 or (03) 6238 2100.

<http://www.artdeco.org.au/> is the Art Deco Society Inc web page. The Society is actively involved in preservation of Art Deco buildings including listing buildings with the National Trust and Tasmanian Heritage Council.



The Harriet Saw Wedding Dress 1852
Photo courtesy Western Australian Historical Society

Victoria

Legislation

Heritage Act 1995

Archaeological and Aboriginal Relics Preservation Act 1972

Heritage Council

Heritage Council Victoria, an independent statutory body, is the primary authority for heritage decision-making and responsible for deciding which places and objects are added to the Victorian Heritage Register. The 10 members receive professional advice from Heritage Victoria, Department of Infrastructure.⁵⁹

Register

The Victorian Heritage Register lists the state's most significant historic places, objects and shipwrecks.⁶⁰ Under the Heritage Act, 'place' includes buildings, gardens, trees, archaeological sites, shipwrecks, precincts and land. 'Object' includes building contents, archaeological artefacts and relics associated with places that have state significance.⁶¹

The Heritage Inventory is a list of all known historical archaeological sites in Victoria. Historical archaeological artefacts are also protected by law. Even loose bits of glass and crockery are protected. Heritage Vic maintains a large collection of shipwreck and land archaeological relics.⁶²

What is included on the Register

The register includes buildings, places, objects, cemeteries, precincts, shipwrecks and historical archaeological sites.

The [Victorian Heritage Register Online](http://www.heritage.vic.gov.au/Who-1.html) can be searched at <http://ndoiext01.doi.vic.gov.au/doi/hvolr.nsf>. If a place is on the

⁵⁹ <http://www.heritage.vic.gov.au/Who-1.html>

⁶⁰ <http://www.heritage.vic.gov.au/Who-1.html>

⁶¹ <http://www.doi.vic.gov.au/doi/hvolr.nsf>

⁶² http://www.heritage.vic.gov.au/FAQ_five.html

Heritage Register it will have a VHR number while a HI number identifies places on the Inventory.⁶³

Anyone can nominate a place to the Heritage Register, but to be successful nominations must address the criteria for assessment of cultural heritage significance adopted by the Heritage Council.

Criteria for inclusion on the register

A: The historical importance, association with or relationship to Victoria's history of the place or object

B: The importance of a place or object in demonstrating rarity or uniqueness

C: The place or object's potential to educate, illustrate or provide further scientific investigation in relation to Victoria's cultural heritage

D: The importance of a place or object in exhibiting the principal characteristics or the representative nature of a place or object as part of a class or type of places or objects

E: The importance of the place or object in exhibiting good design or aesthetic characteristics and/or in exhibiting a richness, diversity or unusual integration of features

F: The importance of the place or object in demonstrating or being associated with scientific or technical innovations or achievements

G: The importance of the place or object in demonstrating social or cultural associations

H: Any other matter which the Council considers relevant to the determination of cultural heritage significance.⁶⁴

Responsibilities

Heritage Victoria provides support to the Heritage Council Victoria, maintains the Heritage Register and provides heritage advice within a range of departmental programs, including historical and maritime archaeology programs.⁶⁵ Heritage

⁶³ http://www.heritage.vic.gov.au/FAQ_nine.html

⁶⁴ <http://www.heritage.vic.gov.au/hcvcriteria.html>

⁶⁵ <http://www.heritage.gov.au/index-vic.html>

Victoria deals with all sorts of places, whether they're privately or government-owned.⁶⁶

Heritage Victoria is also responsible for protecting Victoria's archaeological heritage and managing historic shipwrecks and relics, providing educational services, resources and support for heritage related projects and liaising with local government in support of local heritage.⁶⁷

Government heritage grant programs

The Public Heritage Program assists state and local government agencies to identify, maintain, promote and capitalise on heritage assets in both private and public ownership.⁶⁸ The Program also assists with funds for the repair, restoration and refurbishment of important historic places and assists with the identification and assessment of heritage places. Under the scheme local governments can apply for funds for heritage surveys and grants to assist with engaging a heritage advisor. Community not-for-profit organisations, such as Historical Societies, in association with their local government body may apply for capital works funding for places listed by the state or under the local authorities planning scheme or places that will be listed.⁶⁹

Web page(s) and state government agency address

<http://www.heritage.gov.au/index-vic.html> lists state government heritage agencies, database, legislation and non-statutory heritage sites with links to them.

<http://www.doi.vic.gov.au/heritage/> is most useful with its links to the register database, Public Heritage Program and information on grants, and Financial assistance which provides data for owners of listed places.

⁶⁶ http://www.heritage.vic.gov.au/FAQ_three.html and <http://www.heritage.vic.gov.au/Who-1.html>

⁶⁷ <http://www.doi.vic.gov.au/doi/internet/heritage.nsf>

⁶⁸ <http://www.heritage.vic.gov.au/php.html>

⁶⁹ <http://www.doi.vic.gov.au/doi/internet/heritage.nsf> and linked pages

<http://www.heritage.vic.gov.au/> is the home page for Heritage Victoria. It has useful web pages on Shipwrecks, Gardens, Archaeology and Buildings. Heritage technical notes has an index to useful information. If you click on How do I? then nominate a place you will arrive at a web page with guidelines on how to fill out a nomination, what is meant by history, description and the statement of cultural heritage significance.

For more information write to the Heritage Council of Victoria, PO Box 2797Y, Melbourne Vic 3001 or telephone (03) 9655 6519.

Other statutory listings

Local government authorities protect local buildings and places of local historic significance by identifying them in local planning schemes.⁷⁰ If a site is not of ‘state significance’, then it won’t get onto the Heritage Register. However, if it is of local significance then local government authorities have powers to protect it through their planning schemes as councils have a responsibility in law to use their planning schemes to conserve and enhance those places of scientific, aesthetic, architectural, historical or cultural value. Planning approvals are required before some changes, and for removal of trees or demolishing of a local heritage place.⁷¹

Aboriginal sites are handled by Aboriginal Affairs Victoria which is part of the Department of Natural Resources and Environment.⁷² Within this Department is Aboriginal Affairs Victoria and its Heritage Services Branch is responsible for management of Victoria’s significant Aboriginal cultural heritage and administering relevant state and commonwealth cultural heritage legislation. For assistance write to Aboriginal Affairs

⁷⁰ <http://www.heritage.vic.gov.au/Who-1.html> and <http://www.heritage.gov.au/index-vic.html>

⁷¹ http://www.heritage.vic.gov.au/FAQ_six.html

⁷² http://www.heritage.vic.gov.au/FAQ_eight.html

Victoria, PO Box 515, East Melbourne Vic 3002 or ring (03) 9637 8000.⁷³

Non-statutory registers

The [National Trust of Australia \(Vic\)](http://www.natrust.com.au) web page is <http://www.natrust.com.au> and the register can be searched online at <http://www.natrust.com.au/register/quicksearch.cfm>. For information you can write to 4 Parliament Place, Melbourne VIC 3000 ring the Trust by dialling (03) 9654 4711 or send an e-mail to info@natrust.com.au.

<http://www.artdeco.org.au/> is the Art Deco Society Inc web page. The Society is actively involved in preservation of Art Deco buildings including listing buildings with the National Trust and Heritage Victoria.

Other agencies and grants

Check with your local government authority for community grants, other relevant funding and what helpful publications they might have.

73

http://www.nre.vic.gov.au/web/root/domino/cm_da/nrenab.nsf/frameset/NRE+Aboriginal+Affairs?OpenDocument



Blanche Eliza Habgood (nee Brown) Ball gown, originally her wedding dress

Photo courtesy Western Australian Historical Society

Western Australia

Legislation

Heritage of Western Australia Act 1990

Heritage Council

The Heritage Council of Western Australia is the government advisory body on heritage matters. Council identifies, provides for and encourages the conservation of places that have cultural heritage significance by providing advice to the public and Minister for the Environment and Heritage, and establishing and maintaining the Register of Heritage Places. Where there is an objection to entry of a place in the Register, the matter is referred to the Minister for a decision.

Register

The Register of Heritage Places is a statutory list of places, buildings, archaeological sites, historic gardens, landscape features and historic cemeteries within Western Australia that have been assessed by the Heritage Council and are considered to have cultural heritage significance. Information on places in the Register and other places of significance, including places listed in local government heritage inventories and other non-statutory lists, can be accessed from the Heritage Council's website.

What is included on the Register

Places include building and other structures, historic gardens, archaeological sites, landscape features and historic cemeteries.⁷⁴

To locate items on the register, use the Heritage Council home page <http://www.heritage.wa.gov.au/> then click on Place register or go to <http://register.heritage.wa.gov.au/quicksearch.html>.

Criteria for inclusion on the register

- Aesthetic Value - It is significant in exhibiting particular aesthetic characteristics valued by the community

⁷⁴ <http://www.heritage.wa.gov.au>

- Historic Value - It is significant in the evolution or pattern of the history of Western Australia
- Scientific Value - It has demonstrated potential to yield information that will contribute to an understanding of the natural or cultural history of Western Australia
- Social Value - It is significant through association with a community or cultural group in Western Australia for social, cultural, educational or spiritual reasons
- Rarity - It demonstrates rare, uncommon, or endangered aspects of the cultural heritage of Western Australia
- Representativeness - It is significant in demonstrating the characteristics of a class of cultural places or environments in the state.⁷⁵

Responsibilities

The Heritage Council has nine members, and is supported by the Director and office staff. It maintains the Register, administers the Heritage Grants Program, assists with the identification of places, assesses referrals for inclusion on the Register, provides advice on the development of heritage places, and advises the Minister for the Environment and Heritage. The Heritage Council office also provides information to the public and prepares and delivers an education program.⁷⁶

The Heritage Council provides a Regional Heritage Advisory Service to assist owners and local governments in the conservation of heritage listed places in regional areas. Regional Heritage Advisers can also provide advice on the proposed development of non-registered places.

Government heritage grant programs

From May 2002, the Heritage Grants Program funding will assist with conservation works to privately owned places already listed in the State Register of Heritage Places, and Conservation Plans for places in, or eligible for entry in the Register.

⁷⁵ <http://register.heritage.wa.gov.au/list.html>

⁷⁶ <http://www.heritage.wa.gov.au/history.html>

The Lotteries Commission of Western Australia may provide grants to not-for-profit community groups based in Western Australia and providing charitable or benevolent benefit to the Western Australian community. Grants may include Cultural Heritage - Conservation grants, which assist communities in understanding their cultural heritage. Projects should demonstrate how they enhance community identity and a sense of place. For information on Lotteries Commission grants, including Cultural Heritage - Conservation grants, visit <http://www.lottery.wa.gov.au/corporate/> and click on the Grants Guide banner. The contact address is PO Box 1113 Osborne Park, WA, 6917 and phone number is (08) 9340 5270.⁷⁷

Web page(s) and state government agency address

<http://www.heritage.gov.au/index-wa.html> lists state government heritage agencies, database, legislation and non-statutory heritage sites with links to them.

<http://www.heritage.wa.gov.au> is the Heritage Council's home page. Click on the links to the right of the logo, then the Submenu tabs for further information.

<http://www.heritage.wa.gov.au/assistance/grants.html> provides grant information.

<http://register.heritage.wa.gov.au/list.html> explains about the register, nominations and assessment process and Municipal Inventories.

For more information write to Heritage Council of Western Australia, PO Box 6201, East Perth WA 6892 or ring either (08) 9221 4177 or 1800 644 177.

Other statutory listings

Municipal Inventories are local council listings of buildings of heritage importance to the community. While local councils are required to prepare such a list, there are no statutory implications

⁷⁷ Lotteries Commission of Western Australia

other than a requirement for the list to be sent to the Heritage Council for public information. Although the decision to enter a place into the Municipal Inventory rests with the local government authority, a prime objective of the process is to have the list prepared with public consultation and to achieve community consensus on the result.⁷⁸ Places on the municipal inventory may be selected for inclusion in the town-planning scheme and may be eligible for entry in the Register of Heritage Places.

The [Department of Indigenous Affairs](#) maintains a Register on some 15,000 Aboriginal sites throughout Western Australia and aims to protect and maintain Aboriginal heritage and culture. Go to <http://www.aad.wa.gov.au/> and click on Aboriginal heritage for further information and links.

Non-statutory registers

[National Trust of Australia \(WA\)](#) maintains a listing of places of historic, natural and Aboriginal significance. You can find the Trust web page at <http://www.ntwa.com.au/>. For more information write to PO Box 1162, West Perth WA 6872, ring (08) 9321 6088 or (08) 9266 3831 or send an e-mail to trust@ntwa.com.au.

Other agencies and grants

Check with your local government authority for community grants, other relevant funding and what helpful publications they might have.

⁷⁸ <http://register.heritage.wa.gov.au/list.html> Municipal inventories.